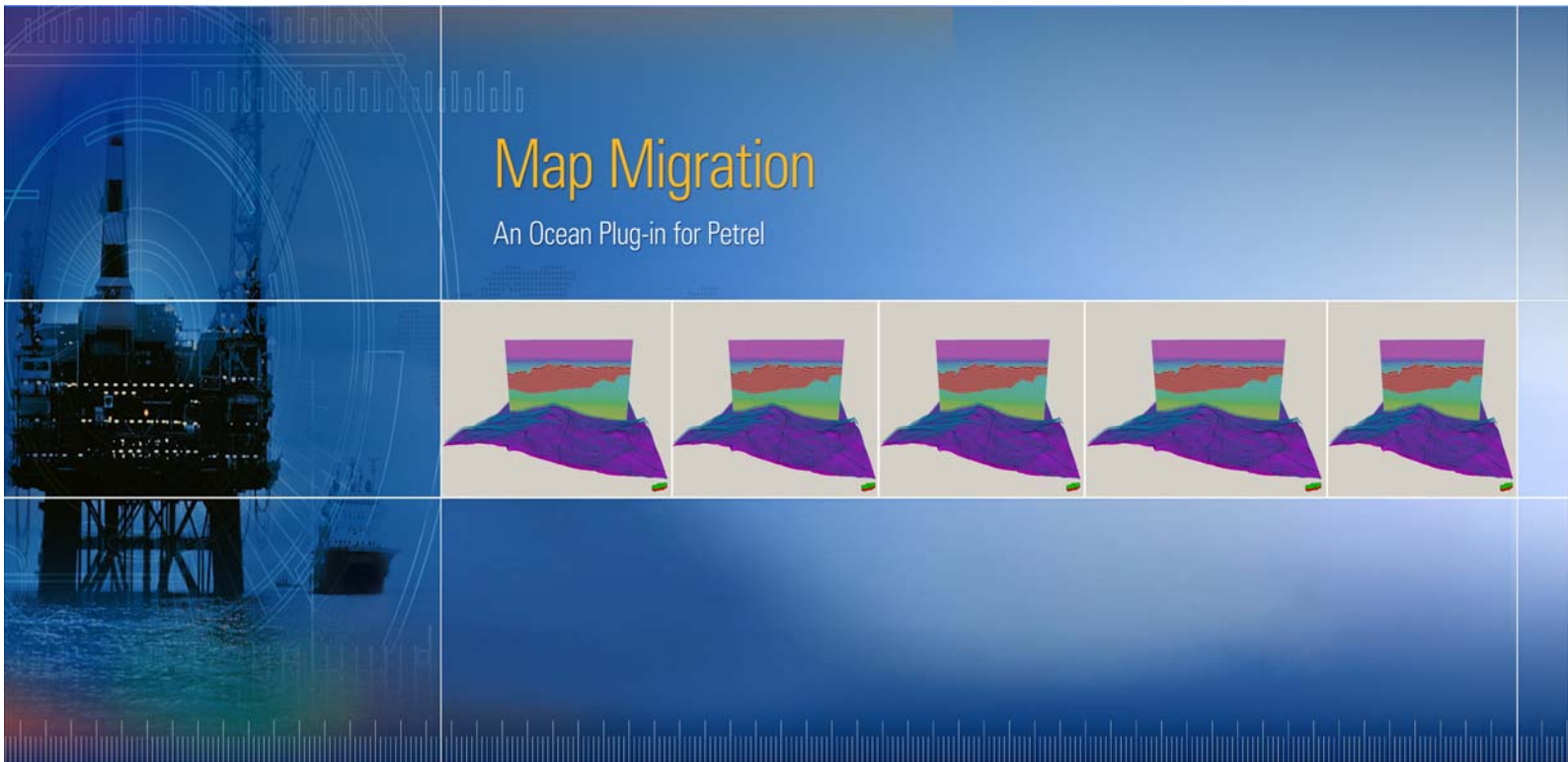


# Interactive Map Migration

Version 2013.1



## Release Notes



**Copyright © 2013 WesternGeco. All rights reserved.**

This document is copyright protected. No part of this document may be reproduced, stored in a retrieval system, or transcribed in any form or by any means, electronic or mechanical, including photocopying and recording, without the permission of Schlumberger. Further, the document contains information proprietary to Schlumberger and should not be disclosed or distributed to third parties without the permission of Schlumberger. To the extent that documents are provided in electronic format, Schlumberger grants permission for the document to be stored electronically. All other restrictions set forth above regarding the documents use or distribution shall apply.

**Schlumberger Trademarks & Service Marks**

Schlumberger, the Schlumberger logotype, WesternGeco, the WesternGeco logotype, and other words or symbols used to identify the products and services described herein are either trademarks, trade names or service marks of Schlumberger and its licensors, or are the property of their respective owners. These marks may not be copied, imitated or used, in whole or in part, without the express prior written permission of Schlumberger. In addition, covers, page headers, custom graphics, icons, and other design elements may be service marks, trademarks, and/or trade dress of Schlumberger, and may not be copied, imitated, or used, in whole or in part, without the express prior written permission of Schlumberger. Other company, product, and service names are the properties of their respective owners.

An asterisk (\*) is used throughout this document to designate a mark of Schlumberger.





---

# Contents

Interactive Map Migration 2013.1	1
Release Date	1
Country of Origin	1
What's New in Interactive Map Migration 2013.1	2
System Requirements	3
Certified Hardware Solutions	3
Public Key Token	4
Software Compatibility	4
Manipulated Domain Objects	5
Custom Domain Objects	6
Licensing	7
License Feature	7
Petrel License Feature	7
License Installation	7
Licensing Support	7
Known Issues	8
Third-Party Libraries and Unmanaged Libraries	9



# Interactive Map Migration 2013.1

Interactive Map Migration 2013.1 for Petrel allows users to perform residual Interactive Map Migration. This takes depth surfaces, demigrates the data to the unmigrated time domain, and remigrates them to depth using the tomography-updated velocity model. A simple vertical depth-to-depth stretch option has also been implemented in the software enhancement.

Interactive Map Migration based on Petrel\* software quickly remigrates interpreted surfaces using velocity models updated by reflection tomography, without incurring the expense and delay of remigrating the seismic traces on a Linux® cluster. The software also includes the ability to map remigrate using anisotropic velocity fields.

The Interactive Map Migration plug-in can be used for the following:

- Repositioning of surfaces with updated velocity model
- Evaluating the impact on horizons from using perturbations generated by the uncertainty workflow
- Scenario testing.

---

**Release Date**

August 2013

---

**Country of Origin**

US/India

## What's New in Interactive Map Migration 2013.1

Interactive Map Migration 2013.1 brings the following new features and program functionality.

**Table 1-1** Revision History

Revision	Changes
2013.1	Rejection distance to remove outliers
	Record of where the ray failed (upgoing or downgoing path)

For detailed explanations, descriptions of functionality, and workflows, please refer to the *Interactive Map Migration 2013.1 User Guide*.



## System Requirements

Interactive Map Migration 2013.1 is only supported on Microsoft® Windows® 7 Professional (64-bit) operating systems.

• • • • •

**Warning:** *If you attempt to run this software using a 32-bit processor or operating system, an error message appears and the software terminates.*

The following table lists the minimum and preferred system requirements for Interactive Map Migration 2013.1.

**Table 2** Interactive Map Migration 2013.1 System Requirements

Minimum System Requirements	
Workstations	Configuration
Recommended Hardware	Dell® T7500
Operating System	Microsoft Windows 7 Professional (64-bit)
Processor	8 core CPU
Memory	48 GB DDR3 SDRAM
Graphics	NVIDIA® Quadro® 5000
Preferred System Requirements	
Recommended Hardware	Dell T7500
Operating System	Microsoft Windows 7 Professional (64-bit)
Processor	8 core CPU
Memory	96 GB RAM
Graphics	NVIDIA Quadro FX 6000

• • • • •

**Important:** *No less than a minimum 48 GB system is recommended for use on a workstation.*

### Certified Hardware Solutions

WesternGeco tests hardware from different vendors. These hardware units are tested, not certified. WesternGeco cannot foresee all issues related to the hardware we test. Problems outside WesternGeco control such as driver and BIOS bugs and operating system limitations may affect the user experience. (For detailed information, please visit the respective vendor sites.)

---

**Public Key Token**

The public key tokens for Interactive Map Migration are:

- **9f3d92d0a0432163**
- **e4cbd77c127a1962.**

---

**Software  
Compatibility**

Interactive Map Migration 2013.1 is compatible with Petrel 2013.1 only.

## Manipulated Domain Objects

The following domain object standard to Petrel is manipulated (changed) by the Interactive Map Migration 2013.1 plug-in:

**Table 3** Manipulated Domain Objects

Domain	Source Object	Description
Data	Pointset	Petrel pointset

## **Custom Domain Objects**

No domain objects are created by Interactive Map Migration 2013.1.

## Licensing

Valid licenses are required to run Interactive Map Migration 2013.1.

An Interactive Map Migration plug-in license can be purchased

- through your WesternGeco software sales representative
- on the Ocean Store at <http://www.ocean.slb.com>.

Interactive Map Migration 2013.1 does not require an Omega\* software license.

A **FLEXnet® 11.6** network license is required to use Interactive Map Migration on a network. The license is run on a server configured by your system administrator or configured locally on your system.

---

### License Feature

Interactive Map Migration 2013.1 has the following license feature:

- Interactive Map Migration – OCEAN\_SLB\_WG\_IMAPMIG

---

### Petrel License Feature

You will also need the following Petrel license feature:

- Petrel 2013.1 (SSPET-UI-SLB-PETREL)

---

### License Installation

If you purchased Interactive Map Migration 2013.1 from your WesternGeco sales representative, the Installer will be on the installation DVD with onscreen instructions.

If you purchased the plug-in from the Ocean Store, full instructions for installing and activating the plug-in licenses are included in the e-mail you will receive.

You can also find the information on the Ocean Store at <http://www.ocean.slb.com> > **Contact Us** > **Ocean Licensing**.

---

### Licensing Support

For licensing support, e-mail [customercarecenter@slb.com](mailto:customercarecenter@slb.com) or contact your local WesternGeco software sales representative.

## Known Issues

Table 1-1 lists current known issues with Interactive Map Migration 2013.1.

**Table 1-1** Known Issues and Workarounds

Description	Workaround
Interactive Map Migration 2013.1 does not provide options for using time domain data.	No workaround is available at this time.
Performance of Interactive Map Migration may be slower because multi-threading is not available in this version.	No workaround is available at this time. This issue will be addressed in a future release.
The Map Migration process after completion may not release the memory, which can cause the process and the application in general to run slowly.	From the <b>Tools</b> menu, run <b>Free memory</b> to release the memory.

## **Third-Party Libraries and Unmanaged Libraries**

The following unmanaged dll is deployed by Interactive Map Migration 2013.1:

Sib.WesternGeco.VolcanXC.dll

